



XINYU CARTON MACHINERY

鑫宇纸箱机械有限公司

20 Years

Focus on printing and packing machinery

鑫宇纸箱机械有限公司



鑫宇

河北省东光县鑫宇纸箱机械制造有限公司

地址: 东光县城南孙家园工业开发区
电话: +86-317-7751123
传真: +86-317-7759168
手机: +86-13483816888 +86-13803233039
英文接听: +86-18175966299
开户行: 东光县工行
帐号: 0408000109245112204
Http://www.dgxyzx.com
E-mail:xinyumachinery2000@gmail.com

Overseas department
Contact: KaiLun Zhao
Whatsapp/wechat/Telegram/Viber : +86-18175966299
Facebook : Kailun Zhao
Skype:kailunzhao1123
E-mail : xinyumachinery2000@gmail.com
info@dgxyzx.com

HEBEI DONGGUANG XINYU CARTON MACHINE MANUFACTURE CO.,LTD

Add:SunJiaYuan Industrial Zone South of Dongguang County
Tel:+86-317-7751123
Fax:+86-317-7759168
Mobile phone:+86-13483816888 +86-13803233039
English answering: +86-18175966299
Bank Account:Dongguang County Industry and Commerce bank
Account Number:0408000109245112204
Http://www.dgxyzx.com
E-mail:xinyumachinery2000@gmail.com



scan barcode
save business card



微信/wechat

Hebei · Dongguang
XinYu Carton Machinery Co.,Ltd.



扫描二维码进官方网站

公司简介

Company profile

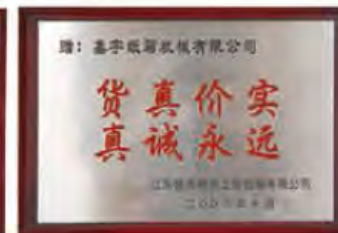
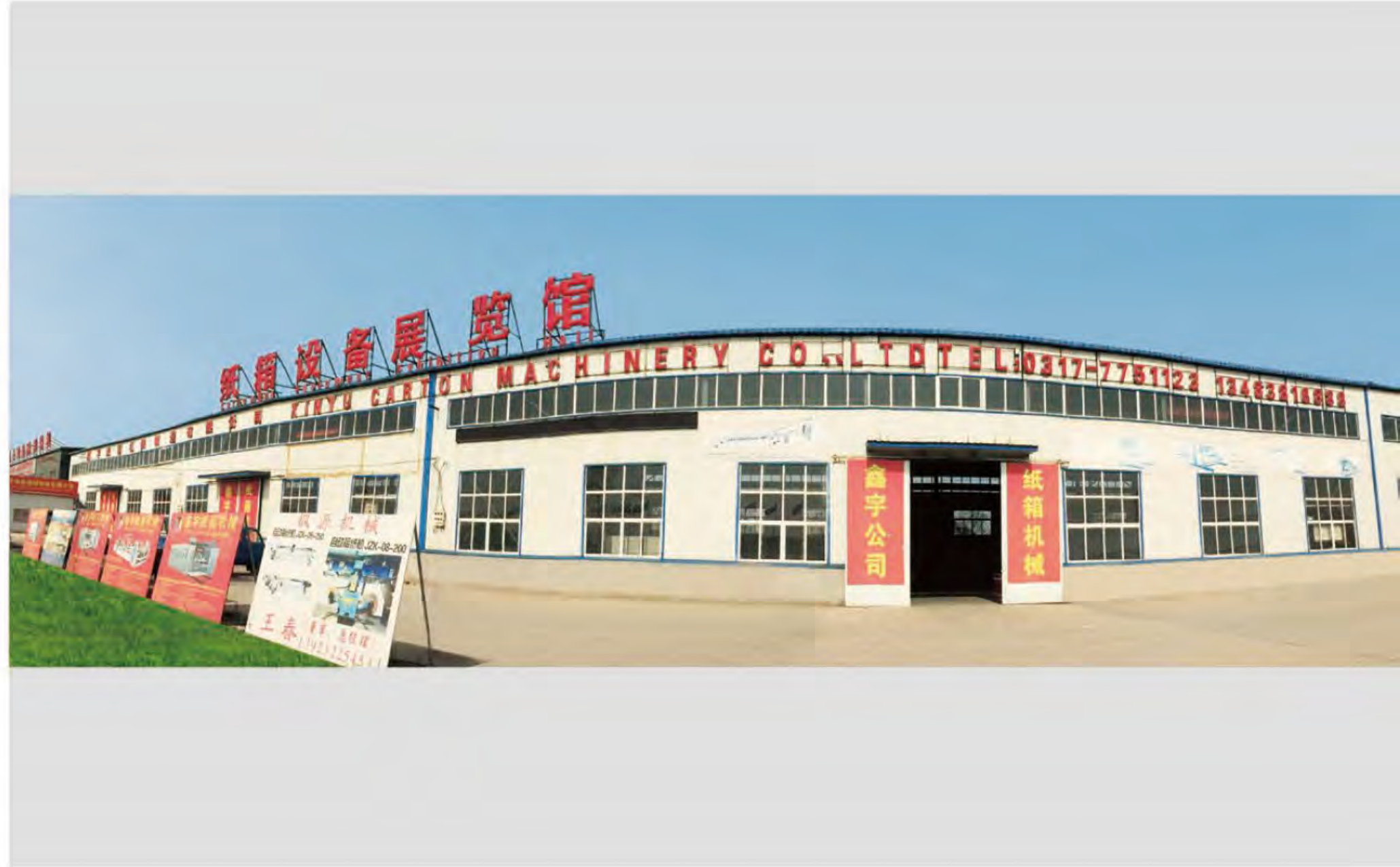
鑫宇纸箱机械成立于2000年，至今已有17年机械制造经验，是国内较早的纸箱机械厂家。公司占地10000平方米，拥有两个生产厂区及先进的加工设备。多年来致力于纸箱机械的更新换代，强大的研发团队相继开发出印刷粘箱联动线，高清水墨印机，高速水墨印机，圆压圆模切开槽等，拥有多项技术专利。产品行销全国，可就近实地考察机械，并取得自营进出口权，产品出口至乌克兰，阿尔及利亚，俄罗斯，印度，巴基斯坦，乌兹别克斯坦等，伊朗等国家。

产品严格执行工业生产标准及合同要求，重信用守诚信是我公司一贯准则，快速高效的售后团队，确保任何问题一日达，齐全完善的仓库配件，解决任何后顾之忧。

认真处理每位客户的反馈意见，以最佳的品质，最优的价格光交天下友，鑫宇与您共图发展。

欢迎每位客户厂区实地参观。

Based on DONGGUANG ,CANGZHOU ,XINYU CARTON MACHINERY was established in 2000,Mrs Li,the ceo of the company,has always helped in overcoming challenges in the industry. with the rich of experience of around 20 years,we are capable of successfully serving several clients.We are involved in manufacturing, exporting and supplying a comprehensive assortment of Corrugation Machine, Pasting Machine, Punching Machine, Cutting Machine, Printing Machine, Stitching Machine etc. The products we offer are manufactured using finest grade raw material and latest technology in adherence to the set industry norms. In addition to this, these are highly acknowledged among clients for their high efficiency, minimum maintenance, excellent performance, sturdy construction and user friendliness. Customers can also avail these products from us at market leading prices.

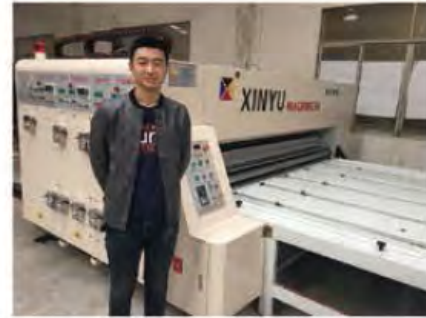


OUR TEAM

公司团队



上海, 昆山办事处



江西湖南办事处



山东办事处



浙江杭州办事处

心在一起叫团队



THE ENTERPRISE

加工车间



OUR CUSTOMER

客户合影



PRINTING SAMPLES

部分印刷效果图



XY-V 全程真空吸附高速水性印刷&烘干&上油&模切机
Vacuum transfer lead edge feeding flexo ink printing & dryer & varnish & die-cutting machine



送纸部 Lead edge feeding unit



印刷部 Printing unit



上光部 Varnisher unit



烘干部 Dryer unit



模切部 Die-cutting unit

► 主要技术参数 Technological Parameter:

型号 model	1200*2400/2600/2800/3000	1400*2400/2600/2800/3000	1600*2400/2600/2800/3000
机器最高速度 max speed	200	200	180
最大进纸尺寸 max feeding size	1200*2050/2250/2450/2650	1400*2050/2250/2450/2650	1600*2050/2250/2450/2650
最小进纸尺寸 min feeding size	350*650	350*650	350*650
隔张送纸尺寸 skip feeding size	1400*2050/2250/2450/2650	1600*2050/2250/2450/2650	1800*2050/2250/2450/2650
进纸厚度 thickness of paperboard	3-11mm		
最大印刷面积(L+W)X2 * (H+W) max printing size	1200*2000/2200/2400/2600	1400*2000/2200/2400/2600	1600*2000/2200/2400/2600
标准印刷厚度 thickness of print plate	7.2mm		
印刷滚筒轴向调节 printing roll axial adjust	± 5mm		
开槽间距 slotting distance	正刀positive	280*60*280*60	
	反刀negative	180*180*180*180	



XY-H 前缘送纸高清水墨印刷模切机 (陶瓷辊刮墨刀)
High speed printer machine with ceramic roll and doctor blade



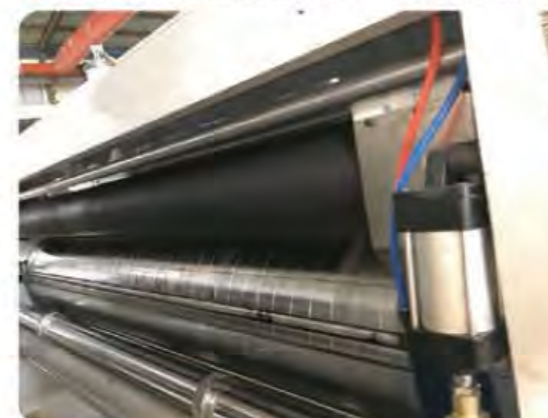
机器视频: <http://w.xinyuzxjx.com/case/47.html>
More videos please search xinyu carton machine on youtube:
<https://www.youtube.com/channel/UCBoJeJWYD5-0LvzEkKc7DMA>

► 主要技术参数 Technological Parameter:

型号 model	1200	1400	1600
机器门幅machine width	1200*2400/2600/2800/3000	1400*2400/2600/2800/3000	1600*2400/2600/2800/3000
机器最高速度max speed	150	150	150
最大进纸尺寸max feeding size	1200*2050/2250/2450/2650	1400*2050/2250/2450/2650	1600*2050/2250/2450/2650
最小进纸尺寸min feeding size	350*650	350*650	420*650
隔张送纸尺寸skip feeding size	1400*2050/2250/2450/2650	1600*2050/2250/2450/2650	1800*2050/2250/2450/2650
进纸厚度thickness of paperboard	3-11mm		
套色精度color register	± 0.5mm		
最大印刷面积max printing size	1200*2000/2200/2400/2600	1400*2000/2200/2400/2600	1600*2000/2200/2400/2600
标准印刷厚度thickness of print plate	7.2mm		
印刷滚筒轴向调节printing roll axial adjust	± 5mm		
开槽间距 slotting distance	正刀positive	280*60*280*60	
	反刀negative	180*180*180*180	



- ◆ 可加配伺服电机
- ◆ 左右挡板位置由丝杠电动调节
- ◆ 隔张送纸装置, 可保证大纸板印刷
- ◆ 7.5英寸高清显示屏可控制送纸部, 印刷部, 开槽部, 模切部, 订单储存可高达100单。
- ◆ 除尘装置, 毛刷和风机可清除纸板表面灰尘及纸屑



- ◆ 优质着墨陶瓷辊: 江苏海力制造, 表面研磨, 镀铬处理, 网线可选300-800, 印刷高清图
- ◆ 可选金属网纹辊, 网线自选可达250
- ◆ 气动式升降网纹辊



- ◆ 胶垫辊采用独立伺服电机驱动, 控制胶垫辊速度, 减少传动环节误差
- ◆ 模切辊相位采用PLC 或电动数字调整, 相位电机变频控制
- ◆ 模切辊胶垫辊间隙电脑PLC调整
- ◆ 模切辊配我公司专利四联开槽。



- ◆ 刮墨刀采用知名品牌, 可达高清印刷
- ◆ 印刷版辊采用挂版装置, 脚踏开关控制正反转, 装卸印刷版快速方便
- ◆ 印刷相位及轴向调整: PLC 触摸屏控制或电动数字型, 横移轴向调节PLC或电动数字调节, 调整范围10mm
- ◆ 设有缺墨报警装置, 实时监控供墨系统



- ◆ 箱高调整PLC触摸屏控制, 普通型: 手动调节
- ◆ 开槽相位PLC电脑控制, 相位电机变频控制, 停机及运行均可调整
- ◆ 电动调刀采用八丝杠设计, 确保调刀精度, 误差小
- ◆ 开槽刀座及压线轮横向移动采用电动同步调整, 触摸屏直接输入纸箱尺寸, 自动调整。



- ◆ 模切辊可气动升降, 使其在空转, 相位调整时不易损坏胶垫, 降低运行成本
- ◆ 模切次数可达500-600万次。
- ◆ 国际知名品牌胶垫。

XY-H 高速水性印刷圆压圆模切开槽组合机
High speed flexo printing die cutting with slotting attachment machine



纸箱微利时代
效率为王

机器视频: <http://w.xinyuzxj.com/case/47.html>
More videos please search xinyu carton machine on youtube:
<https://www.youtube.com/channel/UCBoJeJWYD5-0LvzEkKc7DMA>

► 主要技术参数 Technological Parameter:

型号 model	1200	1400	1600
机器门幅 machine width (mm)	1200*2400/2600/2800/3000	1400*2400/2600/2800/3000	1600*2400/2600/2800/3000
机器最高速度 max speed (pcs/min)	150	150	150
经济速度 running speed (pcs/min)	120	120	120
最大进纸尺寸 max feeding size (mm)	1200*2050/2250/2450/2650	1400*2050/2250/2450/2650	1600*2050/2250/2450/2650
最小进纸尺寸 min feeding size (mm)	350*650	350*650	420*650
隔张送纸尺寸 skip feeding size (mm)	1400*2050/2250/2450/2650	1600*2050/2250/2450/2650	1800*2050/2250/2450/2650
进纸厚度 thickness of paperboard (mm)	2-11mm		
套色精度 color register (mm)	±0.5mm		
最大印刷面积 max printing size (mm)	1200*2000/2200/2400/2600	1400*2000/2200/2400/2600	1600*2000/2200/2400/2600
标准印刷厚度 thickness of print plate	7.2mm		
印刷滚筒轴向调节 printing roll axial adjust	±5mm		
开槽间距 slotting distance (mm)	电调开槽 electrical slotting	300*100*300*100	
	普通开槽 manual slotting	正刀 positive	220*60*220*60
		反刀 negative	120*120*120*120
	圆压圆模切开槽 die cutting with slotting attachment type	280*60*280*60 180*180*180*180	

清废机
WASTE REMOVING MACHINE



堆叠部
Stacking part





送纸部 Lead edge feeding unit

- ◆ 多轮式送纸结构，速度快，送纸平稳，准确
- ◆ 7.5kw高压离心风机采用国内知名品牌，可根据纸板弯曲程度调控风压，确保弯曲，薄板准确传送
- ◆ 左右挡板位置由丝杠电动调节
- ◆ 隔张送纸装置，可保证大纸板印刷
- ◆ 7.5英寸高清显示屏可控制送纸部，印刷部，开槽部，模切部，订单储存可高达100单。
- ◆ 主机变频控制，可节能30%。
- ◆ 除尘装置，毛刷和风机可清除纸板表面灰尘及纸屑

- ◆ Three row feeding wheel ,can keep high speed transfer, high precision stably.
- ◆ 7.5kw blower adopt china famous brand, based on the level of bent paper to adjust air pressure.it is also used for bent, thin paperboard to transfer.
- ◆ Left-right baffle board is adjusted by shaft electrically.
- ◆ Skip feeding device can ensure to transfer the big size of paper sheet
- ◆ 7.5 inch touch screen display manage the feeding unit, printing unit ,slotting unit ,die cutting unit,More than 100 orders can be saved.
- ◆ Delta VFD control, save about 30% power.
- ◆ Cleaning device : brush and air blower can clean the dust and paper scrap

印刷部 Printing unit

- ◆ 印刷版辊采用优质钢材，动平衡，镀铬处理，版辊轴向调节，左右移动10mm
- ◆ 印刷版辊采用挂版装置，脚踏开关控制正反转，装卸印刷版快速方便
- ◆ 优质着墨陶瓷辊：江苏海力制造，表面研磨，镀铬处理，网线可选300-800，印刷高清图
- ◆ 可选金属网纹辊，网线自选可达250
- ◆ 气动式升降网纹辊
- ◆ 橡胶辊:耐磨橡胶，每组均有电脑缺墨报警装置
- ◆ 印刷相位及轴向调整：PLC 触摸屏控制或电动数字型，横移轴向调节PLC或电动数字调节，调整范围10mm
- ◆ 设有缺墨报警装置，实时监控供墨系统
- ◆ 气动隔膜泵上墨，自动循环，加水清洗。

- ◆ Printing roll adopt good quality of steel, dynamic blance, hard chrome treatment, axial adjustment can up to 10mm
- ◆ Printing roll adopt hanging plate device,foot switch can control of positive and reverse,it is convenient and fast to load and unload the printing plate
- ◆ Excellent ceramic cylinder: made by Jiangsu HaiLi,the surface is ground,hard chrome.LPI can choose 300-800,best printing performance Also can choose anilox roll,the LPI can up to 250 Pneumatic lift of anilox roll
- ◆ Rubber cylinder :wear-resisting rubber, when short of ink, automatically alarm ring
- ◆ Printing phase and axial movement:PLC touch screen control or digital diplay control,axnial movement by PLC or digital display,the distance is 10mm
- ◆ Ink shortage alarm ring, monitor ink circulation system
- ◆ Pneumatic ink pump ,auto circulate ,when adding the water, can clean the system.

开槽部 (电调型) Slotting unit(electric adjust)

- ◆ 箱高调整PLC触摸屏控制,普通型:手动调节
- ◆ 开槽相位PLC电脑控制，相位电机变频控制，停机及运行均可调整
- ◆ 电动调刀采用八丝杠设计，确保调刀精度，误差小
- ◆ 开槽刀座及压线轮横向移动采用电动同步调整，触摸屏直接输入纸箱尺寸，自动调整。
- ◆ 开槽刀，厚度7mm,优质合金，小齿型开槽，刀口锋利，毛边少。
- ◆ 可配备打孔装置

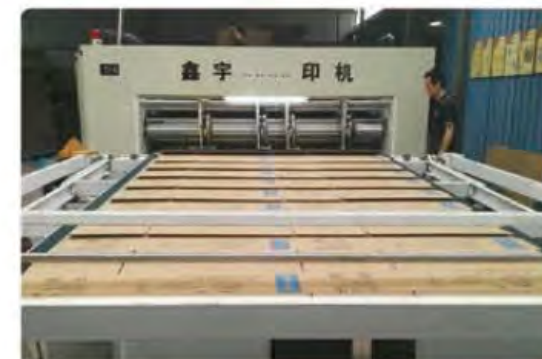
- ◆ The height of box is controlled by plc ,normal type is manually adjust
- ◆ Slotting phase adjustment is by plc control ,phase motor is frequency converting control.when running and stop ,both can adjust it.
- ◆ Electric adjust :8 shaft screw design, keep the high precision.
- ◆ Slotting knife base and creasing wheel anilox movement use synchronous adjustment, put the box size on the touch screen,it is convenient to adjust
- ◆ Slotting knife :the thickness is 7mm,alloy stell ,small shape of sharp knife, better slotting performance.
- ◆ Can chose slotting anvil cover attachment.

模切部 Die cutting unit

- ◆ 胶垫辊轴向横移，移动距离为40mm，延长胶垫使用寿命
- ◆ 胶垫辊采用独立伺服电机驱动，控制胶垫辊速度，减少传动环节误差
- ◆ 模切辊相位采用PLC 或电动数字调整，相位电机变频控制
- ◆ 模切胶垫为台湾进口品牌
- ◆ 模切辊可气动升降，使其在空转，相位调整时不易损坏胶垫，降低运行成本
- ◆ 模切辊胶垫辊间隙电脑PLC调整
- ◆ 模切辊配我公司专利四联开槽。

- ◆ Anvil cover roll axial movement, the distance is 40mm,prolong the lifetime of anvil cover
- ◆ Anvil cover roll adopt separate servo motor drive, control the speed of roll, reduce the error during the transmission
- ◆ Die cutting roll adopt plc or digital control, phase motor is VFD type
- ◆ Anvil cover is imported from TaiWan.
- ◆ Die cutting roll is pneumatically lift, it is not easy to damage the anvil cover, therefore to reduce the running cot
- ◆ The gap between die roll and anvil roll is adjusted by PLC
- ◆ Die cutting with slotting attachment is our company patent.

XY-B 中速水墨印刷模切 / 开槽机
Medium speed flexo printing die cutting / slotting machine



机器视频: <http://w.xinyuzxj.com/case/47.html>
More videos please search xinyu carton machine on youtube:
<https://www.youtube.com/channel/UCBoJeJWYD5-0LvzEkKc7DMA>

► 主要技术参数 Technological Parameter:

型号 Model	单位	2200	2600	2800	2200	2600	2800
版辊直径Diameter of roller	mm	Φ480			Φ410		
最大送纸幅面Max. Feeding area	mm	1400 × 2000	1400 × 2400	1400 × 2600	1200 × 2000	1200 × 2400	1200 × 2600
最大印刷Max. Printing area	mm	1400 × 1800	1400 × 2200	1400 × 2400	1200 × 1800	1200 × 2200	1200 × 2400
适应纸板厚度Suitable cardboard thickness	mm	3-11					
开槽间距(正刀)Slotting distance(obverse knife)	mm	260*60*260*60					
开槽间距(反刀)Slotting distance (reverse knife)	mm	160*160*160*160					
主电机功率Main motor power	kw	单印7.5 双印11 三印18 四印22 Single print 7.5 double print 11 three print 18 four print 22					
工作最高速度Max. Working speed	Pcs/min	120					
工作经济速度Max. Economic speed	Pcs/min	80-100					



圆压圆四联模切开槽组合部

国家专利证号: 201120257969.9 (仿冒必究)

XY-C 链条式多色印刷圆压圆模切开槽机
Chain feeding Multicolor Printing Rotary Die-cutting With Slotting Machine



机器视频: <http://w.xinyuzxjx.com/case/47.html>
More videos please search xinyu carton machine on youtube:
<https://www.youtube.com/channel/UCBoJeJWYD5-0LvzEkKc7DMA>



► 主要技术参数 Technological Parameter:

机械型号 Model	轮切直径 Diameter	过纸面积mm ² Feeding area	有效印刷面积mm ² Valid printing area	工作速度Pcs/min Working speed	最小过纸尺寸 Min feeding size
XY-C1 2800	φ 400	1200*2600	1200*2400	0-60	380*650
XY-C1 2800	φ 480	1400*2600	1400*2400	0-60	420*650
XY-C1 2800	φ 530	1600*2600	1600*2400	0-60	480*650
XY-C1 2800	φ 600	1800*2600	1800*2400	0-60	520*650
XY-C1 2800	φ 700	2100*2600	2100*2400	0-60	600*650
开槽间距 slotting distance (mm)	正刀positive	220*60*220*60			
	反刀negative	120*120*120*120			

► 功能与特点:

- ◆ 送纸:链条推纸进料。
- ◆ 机组开合采用电动行走(有过载保护功能)气动锁紧;
- ◆ 印刷辊:可采用先进简便实用的勾槽挂版(可选)。装卸版时可由脚踏开关独立控制。相位调整采用不停机360度电动数字式调整,可根据误差输入数据,自动调整。
- ◆ 停机匀墨,短时停机墨路工作,免清洗保证印品质量,使着墨色度一致;
- ◆ 箱高手动调整,四刀同步,

► Used and characteristics:

- ◆ Paper-feeding: Chain feeding.
- ◆ lock and unlock the unit adopts electrical movement and pneumatic locking (with overload protection function).
- ◆ Printing roller: adopt the convenient and practical hanging plate with groove (Optional). Loading and unloading the plate can be independently controlled by the pedal switch. The phase adjusting adopts non-stop-working, 360° electrical and numerical adjustment. I
- ◆ When stop working, the ink will circulate for a short time. Cleaning-free to guarantee the quality of the printed things and make the inking color showing no difference.
- ◆ manually adjust the height of the carton. Four knives are synchronously adjust.

可加配送纸机

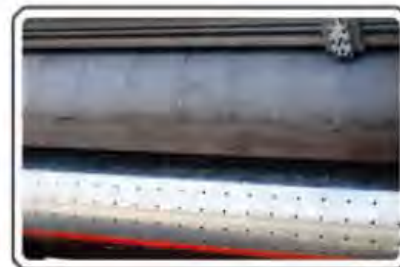
送纸机

Auto feeder

- ◆ 纸板尺寸调节采用丝杆调整机构,一人操作,简易迅速。
- ◆ 方便可调码纸台,更好地适应各种纸板,而且送纸稳定准确。
- ◆ 进纸皮带采用优质橡胶无缝带,摩擦力大,寿命长,低噪音,易保养,经济效益高。
- ◆ 双张力控制,方便可靠。
- ◆ 传动轴采用花纹辊,增加与输纸皮带的摩擦,保证纸板输送顺畅高速。
- ◆ 本机具有电磁离合器分离制动机构。
- ◆ 本机电器采用PLC自动控制,自动化程度高。
- ◆ 变频器驱动电机,实现调速运转稳定。
- ◆ 光电信号通过PLC控制电磁离合制动,实现与主机同步。
- ◆ Cardboard size adjustment adopts screw adjusting mechanism, one operation, easy and quick.
- ◆ feed belt is made of high quality rubber, friction, long lifetime, low noise, easy maintenance, high efficiency.
- ◆ Double tension control, convenient and reliable.
- ◆ use pattern roll shaft, increasing friction with the feed belt to ensure smooth delivery cardboard speed.
- ◆ The machine has an electromagnetic clutch-brake mechanism.
- ◆ The machine adopts PLC automatic electrical control, a high degree of automation.
- ◆ inverter drive motor achieve stable operation.
- ◆ PLC photoelectric signal by controlling the electromagnetic clutch brake, to achieve synchronization with the host.



XY 前缘送纸电脑全自动圆压圆模切机
Lead Edge Feeding Rotary Die-cutting Machine



► 用途与特点:

- ◆ 采用PLC程序控制, 保护功能完善, 控制可靠性高;
- ◆ 触摸屏实现人机对话操作方便直观;
- ◆ 软辊自动修磨机构提高胶套重复使用率, 可修磨3-4次;
- ◆ 限速度自动补偿确保每一批纸箱的模切尺寸完全一致;
- ◆ 模切辊为优特钢材质, 壁厚30mm, 平衡校正, 镀硬铬;
- ◆ 墙板为优质铸铁材质, 壁厚50mm, 大型加工中心制作;
- ◆ 机械式软辊左右横向移动40mm, 胶垫磨损均匀;
- ◆ 六级精磨齿轮采用40Cr材质, 噪音低, 使用寿命长;
- ◆ 采用世界先进的前缘送纸系统, 送纸精度高, 速度快, 送纸轮寿命长, 送纸实现10000张/小时, 精度±0.5mm;
- ◆ 相位采用微电脑控制, 可360°相位任意调整, 快捷准确;
- ◆ 前挡板手动调整, 侧挡板电脑调整;

► Uses and features:

- ◆ It adopts PLC control system and touch screen.
- ◆ Soft roller repair structure, it can improve rubber lifetime, it can repair 3-4 times.
- ◆ The die-cutting roller is alloy steel in high quality, thickness is 30mm, dynamic balance and hard chrome treatment
- ◆ excellent cast iron, thickness is 50mm. It is made by large processing center.
- ◆ The anvil cover is imported, install conveniently, it can die-cutting 6 million times.
- ◆ roller can be moved right and left 40mm automatically
- ◆ the gear adopts 40Cr material. low noise and long lifetime
- ◆ Die-cutting roller is with auto separate device and reduce rubber wearing.
- ◆ It adopts advanced leading edge system, high feeding precision, fast speed, the speed can be up to 10000pcs/hour, precision is ±0.5mm.
- ◆ The blowing quantity can be adjusted.
- ◆ The phase is adjusted by touch screen.
- ◆ left and right baffle board movement is automatic.

► 主要技术参数 Technological Parameter:

型号 model	1200*2400/2600/2800/3000	1400*2400/2600/2800/3000	1600*2400/2600/2800/3000
机器最高速度max speed	120	120	120
最大进纸尺寸max feeding size	1200*2050/2250/2450/2650	1400*2050/2250/2450/2650	1600*2050/2250/2450/2650
最小进纸尺寸min feeding size	330*600	400*600	450*600
进纸厚度thickness of paperboard	3-11mm		
模切精度die cutting precision	±0.5mm		

XY 400/480/530型圆压圆软辊筒模切机
400/480/530 Type Chain Feeding Rotary Die cutting Machine



► 用途与特点:

- ◆ 采用链条送纸;
- ◆ 模切辊采用自动装置横向移动40mm;
- ◆ 采用差速装置, 自动调整上辊线速度;
- ◆ 模切采用台湾优力胶套;
- ◆ 装有上辊自动修复功能;
- ◆ 本机一次性完成箱片分切、压痕、切角等多道工序。

► Uses and features:

- ◆ The feed chain;
- ◆ Cutting roller automatic device lateral movement 40mm;
- ◆ Differential speed, automatic adjustment of the roller speed;
- ◆ Die cutting adopt Youli cover with Taiwan;
- ◆ Roll with the automatic repair function;
- ◆ The machine carton piece cut off, indentation, cut so much the procedures.

► 主要技术参数 Technological Parameter:

序号 seria	参数名称 Name of parameter	单位 unit	规格specification		
			XY-1270 × 1800	XY-1400 × 2100	XY-1600 × 2500
1	最高速度 Max speed	pieces/min	60	60	60
2	有效模切尺寸 Effective size of die-cut	mm	1200 × 1550	1400 × 1750	1600 × 2250
3	最大纸板尺寸 Max size of paperboard	mm	1270 × 1700	1400 × 2000	1600 × 2400
4	最小纸板尺寸 Min size of paperboard	mm	350	400	450
5	纸板调整范围 Scope of adjusting paperboard	mm	3-11	3-11	3-11
7	外型尺寸 Shape size	mm	3000 × 3000 × 1350	3000 × 3200 × 1350	3000 × 3400 × 1350
6	总功率 Total power	kw	5.5	5.5	5.5



280S/320S 吸附式单面机
280S/320S Vacuum Adsorption Single Facer



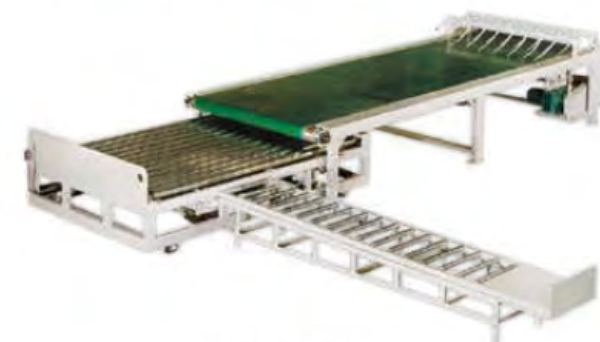
液压无轴支架
Hydraulic Mill Roll Stand



电脑薄刀机
Thin blade slitting creasing machine



NC-1800型电脑螺旋刀高速横切机
NC cut off helical knife machine



直角输纸机
Stacker



双面机
Double Facer

XY AFG **AFG全自动粘箱机**
Full Auto Gluing And Folding Machine



送纸部特色:

1. 吸风进纸及高度可调的后能更好的适应弯曲纸板;
2. 采用高档电磁离合器及电磁刹车系统, 使送纸部可单独控制进纸, 操作简便可靠;
3. 压线轮可调, 适合纸板厚度2-8mm;
4. 二次压痕机构, 可对压痕质量不佳的纸板进行二次压痕。



涂胶折叠部特色:

1. 结构简单可靠的电动胶量可控制装置, 清洗方便;
2. 采用不锈钢涂胶轮, 涂胶均匀, 节省胶量;
3. 采用进口耐磨橡胶皮带输送纸板;
4. 纸板校正装置和压线装置, 压线轮可调。



计数堆积输出部特色:

1. 计数堆码原理简单可靠;
2. 采用数字控制, 操作可靠, 不停机输入数据, 自动计数, 准确输出;
3. 具有纠偏功能, 偏差可调;
4. 计数推出采用气动方式, 动作准确, 快速。

整机构成特点:

AFG全自动粘箱机, 由真空送纸部, 涂胶折叠部和计数堆积输出部三部分组成。采用变频调速, 标配PLC触摸屏控制, 操作简单可靠, 平均粘箱速度150张/分钟。高速节能, 节省人工成本。

The whole machine features:

AFG full automatic gluing and folding machine and it consist of vacuum adsorption feeding part, gluing and folding part and stacking and couter part . It adopts frequency to change speed and controlled by standard PLC touch screen, easy operation and reliable, the average speed can up to 150 sheets/min . High speed and energy-saving and save labor.

Feeding part:

- 1.It can suitable for bend cardboard after adjusting height of cardboard feeding .
- 2.The electromagnetism clutch in high quality , it can make the feeding part control paper inside alone and easy operation and reliable.
- 3.Pressing line wheel is adjusting , the thickness of cardboard can be 2-8mm.
- 4.It is with twice creasing structure , it can process the cardboard in low quality.

Apply gluing and folding part:

- 1.It is with easy and controllable device to control gluing amount and clean easily.
- 2.Stainless gluing wheel, apply gluing evenly and save gluing amount.
- 3.It adopts imported durable rubber and feeding cardboard by belt.
- 4.It is with correction and pressing line device and adjustable pressing line wheel.

Packing and output part:

- 1.Principle of count to stacking is easy and reliable.
- 2.It is controlled by digital and easy operation, keep working to input data, count automatically and output accurate.
- 3.It has function with correction tolerance and the tolerance can be adjustable.
- 4.Output counter adopts pneumatic and accurate movement and fast.

技术参数 Technical Parameter:

型号 Model	2400	2500
最大过纸Max. Feeding size	900 × 2200	1200 × 2500
最小过纸Min. Feeding size	300 × 900	300 × 900
外形尺寸Overall size	L11000 W3000 H1600	L12500 W3200 H1600
整机重量Machine weight	5500Kg	6500Kg
电源要求Power	11.5KW 380V 50HZ	14.5KW 380V 50HZ
适应纸板厚度 Thickness of cardboard	三层、五层瓦楞纸板 It suitable for 3-ply and 5-ply/It suitable for 3-ply and 5-ply	
控制方式Control style	PLC触摸屏	

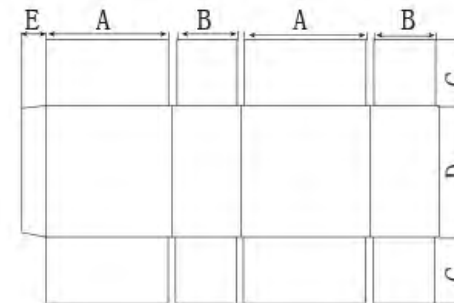
XY BZX **BZX2800型半自动粘箱机**
BZX2800 Semi-auto Gluing And Folding Machine

用途与特点:

本机适用于各类纸板及瓦楞纸箱的糊合, 其操作简单, 无须经验, 一分钟快速变换纸箱宽度和高度最小糊合260mm左右, 是纸箱厂生产较为理想的机器。

主要结构:

本机由主机架、2个小输送机架组成。
主机架: 机架、升降工作台、前段输送装置、前段校正装置、中段输送装置、中段压合装置、成品侧面输出装置、电气控制装置。
本机均采用进口电器, 西门子电气、欧姆龙光电开关、日本东崎计数器、台湾明伟开关电源、糊头采用合金材质, 耐酸碱, 使用寿命长。整机马达除风机、升降电机外, 均采用台湾晟邦电机。



技术参数 Technical Parameter:

参数规格 Specification	BZX2800
最大尺寸(长+宽) × 2mm Max. Size (length+width)X2	2800mm
最小尺寸(长+宽) × 2mm Min. Size (length+width)X2	340mm
最大尺寸(高+宽) Max. Size (height + width)	1515mm
最小尺寸(高+宽) Min. Size (height + width)	260mm
电机功率 Motor power	4KW
机械长度 Machine length	5300mm
机械重量 Machine weight	2150Kg
机械速度 Machine speed	60m/min

XY BZX **半自动压合式粘箱机**
Semi-auto Gluer Machine

功能与特点:

半自动压合式粘箱机是根据用户中小订单需要最新开发的, 它体积小占地少, 操作简便不需要经验, 非常适合小批量产品的生产和品种的更换;适用范围广, 普通纸箱、异型彩盒单页成型的粘合, 加装自动喷胶装置后还能做勾底纸盒和天地盖纸盒;节省胶水, 胶水用量只相当于手工涂胶的1/3;省人工, 机器最高转速56米/分钟, 效率是手工操作的3-4倍;粘接牢固、整齐不溢胶, 专利双头打磨器能非常好的将粘口部进行打磨去除UV光膜层或覆膜塑料层等, 提高胶水的粘接力, 解除了纸箱厂在一些季节纸箱容易开胶的难题。本机由于采用手工收折, 在提高工作效率的同时还适用于全自动机不好加工的压痕线不正、特殊异型与纸面有开窗的制品。

技术参数 Technical Parameter:

规格Model	1500型	1800型
功率Power	3.2kw	3.2kw
电流Current	6.3A	7A
外形尺寸 Overall size	2200 × 1900 × 1300mm	2200 × 2400 × 1300mm
糊盒最大尺寸 Max.Size of box	1500 × 1100mm	1800 × 1100mm
糊盒最小尺寸 Min.Size of box	200 × 260mm	200 × 260mm

Semi-automatic machine Nien me fit, semi-automatic pressure according to user needs the latest development, small and medium-sized order it small volume covers an area of less, easy operation does not need to experience, very suitable for small batch production and variety of replacement;Applicability is wide and ordinary carton, color box sheet forming glue, equipped with automatic spray glue device can do after hook box cover carton of heaven and earth;Save glue, glue dosage equivalent to only 1/3 of the manual glue;Less manpower, machine the highest speed of 56 meters per minute, efficiency is 3-4 times of the manual operation;Adhesion strong, neat don't glue, patent double grinding apparatus can very good remove sticky mouth to grind the UV light membrane layer or plastic laminating machine, etc., to improve the glue stick relay, lifted a cardboard-box factory carton does easy to glue problem in some season.The machine with manual folding, in improving the efficiency of bad also used throughout automata processing of indentation line is not straight, special shaped products with paper Windows.

XY BZJ **BZJ1300、1450型全自动裱纸机**
BZJ 1300/1450 mm Full Auto Laminating Machine



XY BZJ **BZJ1300、1450半自动裱纸机**
BZJ 1300、1450 Semi-auto Laminating Machine



► **主要特点:**

- ◆ 本机是当今后推爪式全自动裱纸机的第四代产品。它操作简单、维护方便、高速度、噪音低、高精度等优势帮助您赢得了市场。
- ◆ 本机主要零部件及电脑控制件均采用日本、德国的名牌产品，确保产品的精度和使用寿命。
- ◆ BZJ系列采用高科技液面控制系统。自动供给机器生产时所需的胶水，并配有胶水回收循环系统，胶量可依附贴合纸张的不同要求进行调整，使胶水涂布于纸面上更加均匀，达到既节省胶水又保证产品质量。
- ◆ 本机适用于印刷包装行业中卡对瓦楞纸的贴合，机器在高速运转时对A、C、b、D、E、F、N楞，三层、五层、七层均可正常工作，裱出的纸张平整度良好，精确度高。

► **Main features:**

- ◆ This machine is the forth generation new product, it is easy operation, convenient maintain, high speed, low noise, high precision and take competed market.
- ◆ The spare parts and computer controller are from Japan and Germany to make sure the precision and using life.
- ◆ BZJ series laminating machine adopts.
- ◆ It is used to laminate corrugated cardboard, when the machine is working in high speed, it can be normal to process 3/5/7 ply and A/c/b/D/E/F/N corrugated, the cardboard after laminating is nice and high precision.

► **技术参数 Technological Parameter:**

机型 Model	单位 Unit	BZJ-1300	BZJ-1450	BZJ-1600
最大用纸尺寸(W×L) Max. Cardboard size(W×L)	mm	1300×1100	1450×11000	1600×11000
最小用纸尺寸(W×L) Min. Cardboard size (W×L)	mm	350×350	350×350	350×350
覆合精度 Laminating precise	mm	≤ ± 1.5	≤ ± 1.50	≤ ± 1.50
最高机械速度 Max. Machine speed	m/min	100	100	100
机械总功率 Total power	kw	12	12	13
机械外形尺寸 Overall size	m	12.5×2.15×2.6	12.5×2.30×2.6	12.5×2.45×2.6
机械总重 Weight	T	6.8	7.2	8.0

► **主要特点:**

- ◆ BZJ-B系列裱纸机：该机采用是底纸吸附式送纸，面纸人工送纸，操作方便，输送准确。底纸和面纸采用光电控制，特殊前规定位，定位准确，底纸不超过前。
- ◆ BZJ-B系列裱纸机：该机压合采用吊悬浮压合。使纸板运行中受力均匀，输送平稳，生产的纸板平整美观，压力带可前后移动，以适合多种规格的纸板生产。
- ◆ BZJ-B系列裱纸机：全机主要部件采用国内外知名厂家的原装产品，寿命长，稳定性良好。

► **Main features:**

- ◆ The machine adopt bottom paper vacuum style feeding, upper paper manual feeding, easy operation, feeding accurate, bottom and upper paper adopt photoelectric control, special front gauge fix position, bottom paper never go ahead.
- ◆ This machine pressure part adopt suspension lamination style, make the board uniform stress, steady feeding, let the board beautiful and smooth, stress belt can move front and behind, can be suitable for many kinds of paperboard.
- ◆ All the machine main parts imported the famous domestic and overseas original products. Long life and steady.

► **技术参数 Technological Parameter:**

机型 Model	单位 Unit	BZJ-1300B	BZJ-1450B	BZJ-1600B
最大用纸尺寸(W×L) Max. Cardboard size (W×L)	mm	1300×1100	1450×11000	1600×11000
最小用纸尺寸(W×L) Min. Cardboard size (W×L)	mm	350×350	350×350	350×350
最高机械速度 Max. Machine speed	m/min	80	80	80
机械总功率 Total power	kw	5	5	5
机械外形尺寸 Overall size	mm	8000×1980×1260	8000×2130×1260	8000×2280×1260
机械总重 Machine weight	T	3	3.3	3.5

XY BZD **BZD-2000高速全电脑式钉箱机 (单片式)**
High-speed single piece stitching machine



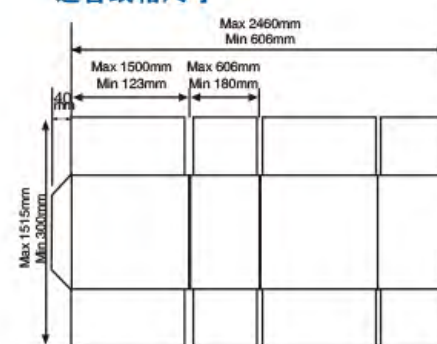
主要特点:

- ◆ 法国施耐德原装进口双伺服驱动, 精度准确, 机械传动部分减少, 可有效减少机械的故障率。
- ◆ 威纶触摸屏操作, 参数 (钉距、钉数、钉种、后挡板) 变换方便快捷。
- ◆ 整个控制系统采用欧姆龙PLC控制系统。
- ◆ 后电动挡板, 采用步进马达驱动, 尺寸准确, 变换尺寸更方便快捷。
- ◆ 光电和接近开关采用施耐德品牌。
- ◆ 底模, 刀片采用日本钨钢制作 (耐磨)。
- ◆ 整组钉头全部采用特殊钢制作, 电脑锣精密加工。
- ◆ 可钉单钉、双钉//, 加强钉 (// // // // 两头是双钉中间部分为单钉) 一次性完成, 能适合不同客户对钉种的不同要求。
- ◆ 变换纸箱尺寸和调节纸箱钉距只需一分钟就可完成, 大大节省时间操作方便。
- ◆ 可钉有盖箱&无盖纸箱 (有无盖箱要钉的情况下在订购机械时须说明)。
- ◆ 前端送纸部自动计数, 送纸台设有光电感应装置, 送纸时自动上升。
- ◆ 后段有自动计数功能, 做好的成品张数可按设定数量 (1-99) 分叠送至输送机末端, 方便打包捆扎。
- ◆ 钉距: 30-120mm任意可调。
- ◆ 压纸胶轮间隙电动调整。
- ◆ 工作台升降有效高度: 900mm。
- ◆ 整机订单式调整, 可储存100个订单。

技术参数 Technological Parameter:

最大尺寸 (长+宽) Max(L+W)x2	2460mm
最小尺寸 (长+宽) Min(L+W)x2	606mm
最大尺寸高+盖X2 Max H+Cx2	1515mm
最小尺寸高+盖X2 Min H+Cx2	300mm
给纸高度 Hight of feeder	900mm
使用马力Power	6HP
机械长度Length	4500mm
机械宽度Width	2100mm
机械重量Weight	2000kg
机械速度Speed	450staples
钉距 (小、大、mm) Stitching Pitch	30-70mm
订数 Number of Stitching	1-99Stitches

适合纸箱尺寸



XY **双片式高速半自动钉箱机**
Double pieces high-speed stitching machine



用途与特点:

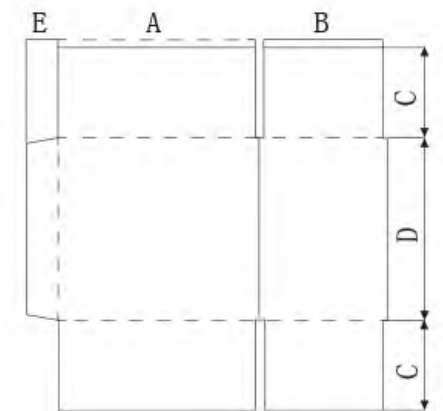
- ◆ 可钉单钉、双钉、加强钉一次性完成, 能适合不同客户对钉种的要求。
- ◆ 一分钟快速变换尺寸, 操作容易不须经验。
- ◆ 人机界面操控, 方便操作。
- ◆ 后段自动计数, 做好的成品个数可按设定数量 (1-99) 分叠送至输送机末端。
- ◆ 半成品钉合至成品摆放好只须两个人操作, 操作简单方便, 减少薪资。

Use and Characteristics:

- ◆ It can nail single nail, double nail, Strengthen nail completed in one-time, can be suitable for different kinds of customer requirements of nails.
- ◆ It can be changed size quickly in one minute, can be operated easily and not had to experience.
- ◆ It is man-machine interface control for convenient operation.
- ◆ Back-automatic counting. The finished products done can be sent to the end of conveyor by setting the number (1-99).
- ◆ Semi-finished products nailing to the finished products displayed only need two operators. This can operate simply and reduce wages.

技术参数 Technical parameters:

型号及参数 Models and parameters	SDJ-2500	SDJ-3000	SDJ-3500
最大纸张尺寸(A+B) * 2(mm) The biggest paper size	4000	4800	6000
最小纸张尺寸(A+B) * 2(mm) Minimum size of paper	1060	1060	1060
最大纸箱长Amm The biggest carton long	2850	2850	2850
最小纸箱长Amm The smallest carton long	350	350	350
最大纸箱宽Bmm The biggest carton width	1000	1200	1500
最小纸箱宽Bmm The smallest carton width	120	120	120
最大纸张高 (C+D+C) The biggest paper high	2500mm	2500mm	2500mm
最小纸张高 (C+D+C) Minimum high paper	400mm	400mm	400mm
最大摇盖尺寸C (mm) The biggest shake cover size	560	560	560
最小摇盖尺寸C (mm) Minimum rock cover size	50	50	50
最大高度D (mm) Maximum height	2000	2000	2000
最小高度D (mm) The minimum height	150	150	150
最大钉舌宽度(mm) Maximum width of the tongue	45	45	45
钉距mm Nail is apart from the	30-120	30-120	30-120
钉数 Pin number	1-99	1-99	1-99
打钉速度 (次/mim) Nailing speed	500	500	500
机器重量 (T) Machine weight	2.5	3	3.5



BFY系列薄刀分纸压线机
BFY THIN BLADE SLITTING MACHINE



用途与特点:

- ◆ 采用预压送纸，送纸平稳；
- ◆ 采用薄刀分切（厚度仅为1毫米）、设有自动、手动砂轮磨削，保持刀刃锋利，使分切的纸板平滑整齐；
- ◆ 纸板通过预压、分切后再经过压线来完成产品要求，压痕不出现裂痕现象；
- ◆ 可提供瓦楞纸板生产线改造用薄刀分纸机。

Use and characteristics:

- ◆ Pre-pressed paper feeding insures the stability of paper transmitting.
- ◆ Thin edge knife (about 1mm thickness) with automatic and manual grinding keep edge sharp and make slit paper smooth and tidy.
- ◆ Press lines on slit pre-pressed paper board ensure the original lines without crack.
- ◆ The thin edge slitter used for corrugated board production line can be provided.



技术参数(Technological parameter):

参数 Parameter	型号 Model number	BFY-2000	BFY-2500
适用纸板宽幅	Width of paper(mm)	2000	2500
最高纸板速度	max speed of paper(m/min)	141	141
分纸刀数	Slitting cutting number	3-5	3-5
最小分切宽度	Minimum press line width(mm)	200	200
最小压痕宽度	Minimum pressure line width(mm)	200	200
薄圆刀外径	Outer diameter of thin blade(mm)	260	260
薄圆刀厚度	Thickness of thin blade(mm)	1	1
电机功率	Power(kw)	4	4
机器重量	Weight(kg)	1200	1300
外形尺寸(mm)长×宽×高	Size of configuration (L×W×H)	2630×1791×1130	3050×1791×1130



平压压痕切线机 (扣盒机)
Creasing And Cutting Machine



立式废纸打包机
Vertical wastepaper baling press



高速自动隔板机
High-Speed Auto Dividing-paper Board Machine



BJ系列裱胶机
BJ Corrugated Board Gluing Machine



钉箱机
Stitcher



PE 打包机
PE belt bundling machine



四联开槽切角机
Angle cutter machine



半自动捆扎机
Semi-Auto Binding Machine